

Telling Our Story with Data: Thresholds Metro West ACCESS Project

Grant # TI16473

Thresholds, Chicago, IL

Jessica Leddy, M.S.W., L.C.S.W.

Jackii Johnson-Stovall, CRC, L.C.P.C.

1) Project Background

Thresholds, a large urban psychosocial rehabilitation agency in Chicago, received a grant from SAMHSA to provide services to homeless persons with mental illness and co-occurring substance abuse issues to persons on the west side of Chicago.

•The 5 Year project began in October of 2004 and will end in September 2009

- Total of 145 persons will be served with an average tenure of 1-2 years with the team and a maximum capacity of 45 members at any given time
- To date, 85 members have been served by the team

GOAL:

To provide EBP's to homeless persons with mental illness and co-occurring substance abuse disorders and to locate and provide stable housing

The study utilizes two EBP's as the main treatment models:

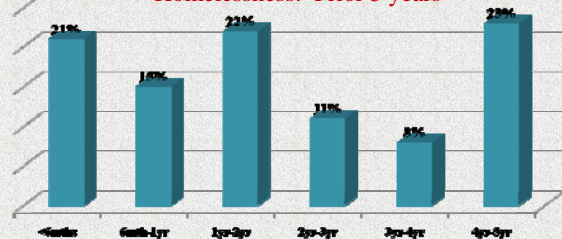
Assertive Community Treatment (ACT) and Integrated Dual-Disorder Treatment (IDDT)

ACT	IDDT
•Multidisciplinary Staffing	•Multidisciplinary Staffing
•Total Team Approach	•Screening and Comprehensive Assessment
•Integration of Services	•Comprehensive Services
•Low Client-Staff Ratios	•Community Focus
•Locus of Contact in the Community	•Assertive Outreach and Engagement
•Assertive Outreach and Engagement	•Consumer Driven
•Ready access in time of crisis	•Focus on developing motivation for treatment
•Close Collaboration with other community providers	•Stage-Wise Interventions

2) Population Description

Demographics	%
Diagnoses	
Schizophrenia/Schizoaffective	57%
Bipolar	18%
Major Depression	13%
Other	12%
Gender	
Female	20%
Male	80%
Race	
African American	62%
Caucasian	21%
Bi-Racial	13%
Other	4%

Homelessness: Prior 5 years



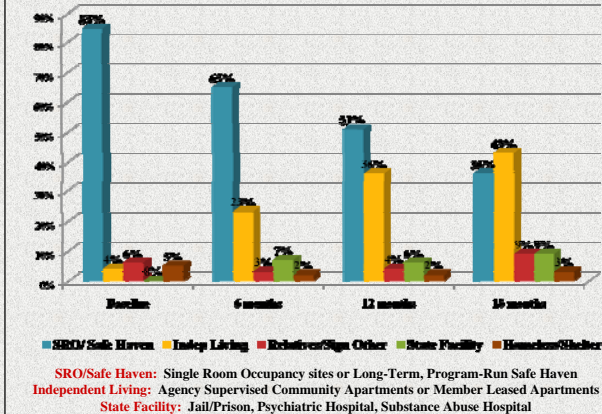
3) The ACCESS Team Staff

- Team Leader
- Peer Specialist (Consumer)
- IDDT Specialist
- Nurse
- 2 FT Case Managers
- Vocational Specialist*
- Housing Locator*
- Psychiatrist

*Newly added in October 2006 with Supplemental Grant funds

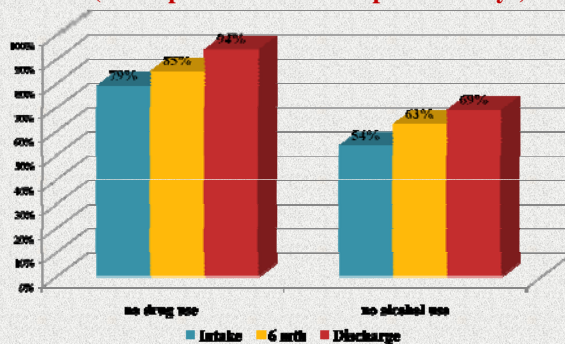
4) Outcome Data

Living Arrangement



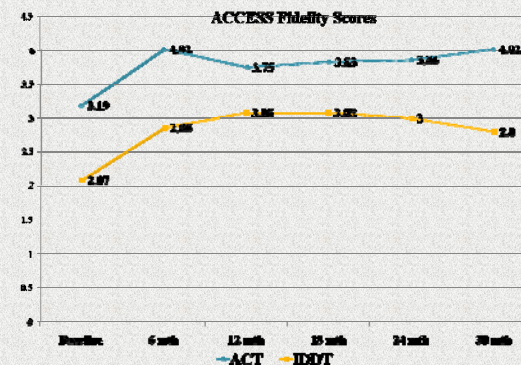
Substance Abuse

(self report on no use for prior 30 days)



5) Fidelity Scores

Two scales were used to measure fidelity: The Dartmouth Assertive Community Treatment Scale (DACTS) and the SAMHSA Integrated Dual Disorders Treatment (IDDT) scale.



6) Barriers

Barrier	Action Plan
Implementing EBP's	•Due to the difficulty of implementing 2 EBP's simultaneously, the team requires on-going, intensive training and consultation. IDDT is difficult to learn and put into use. The team will work with the agency IDDT Coordinator for training and consultation.
Employment for IDDT Members	• Because it is often difficult finding employment for members who are using or actively symptomatic, a vocational specialist was a member of the team.
Lack of Safe, Affordable Housing	•Because finding safe, affordable housing was a main goal (and crucial for IDDT), a FT Housing Locator was hired.
High Staff Turnover	•Although there was no staff turnover during Year 1 of the grant, there has been much turnover over the past few years. The management team is working hard with the HR department to locate stable, long-term staff who are well-trained.
Time Constraints of the Grant	•The majority of members can only be served from the team for an average of 1-2 years. This does not mesh well with the tenants of IDDT and building relationships over time. The team has done a good job at making thoughtful considerations when closing members and usually has transferred them to other teams within Thresholds.

7) Here On Out

For the remainder of the grant, the project will focus on:

- More intensive and structured IDDT training and consultation for the team.
- Increasing the intake rate and moving members on accordingly.
- Increasing Fidelity Scores.